

ANNEXURE 4

COLONY MORPHOLOGY, SHAPE & CELL ARRANGMENT OF MICROORGANISM



CIRCULAR



IRREGULAR



FILAMENTOUS



RHIZOID



FLAT



RAISED



UMBONATE
(having a knobby
protuberance)



CRATERIFORM



CONVEX



PULVINATE
(cushion-shaped)



ENTIRE



UNDULATE
(wavy)



LOBATE



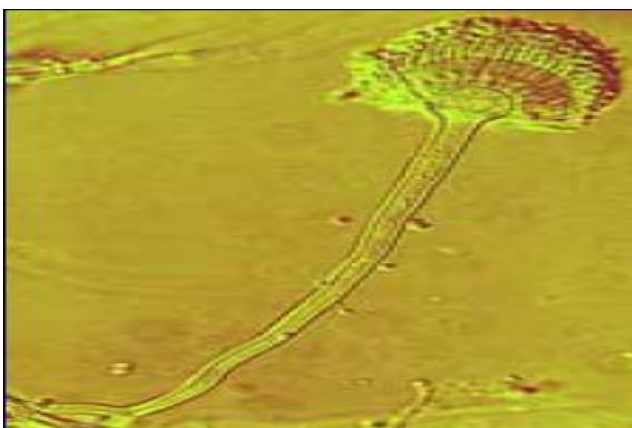
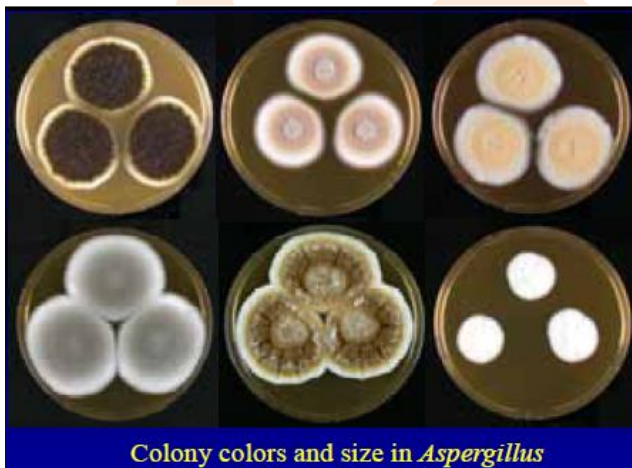
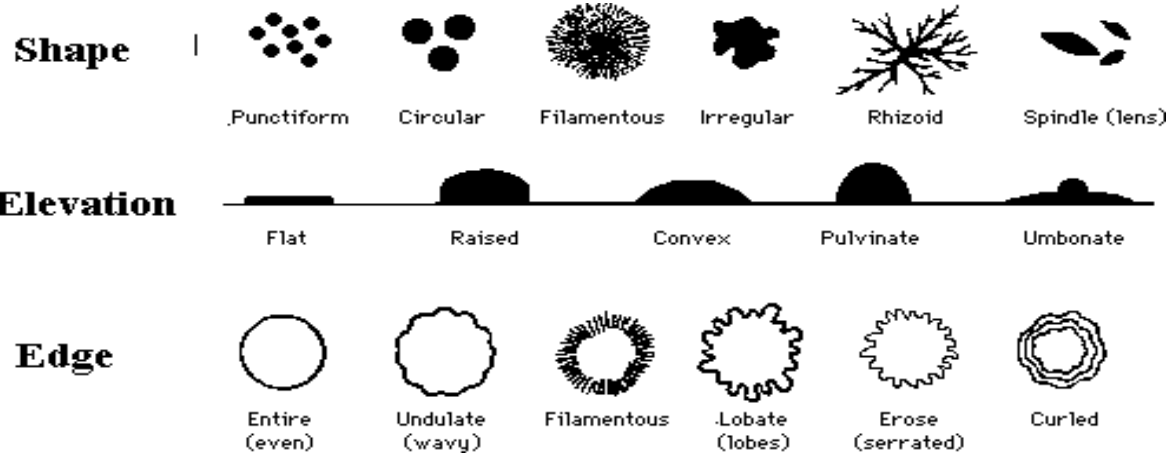
CURLED



FILIFORM
(filamentous)

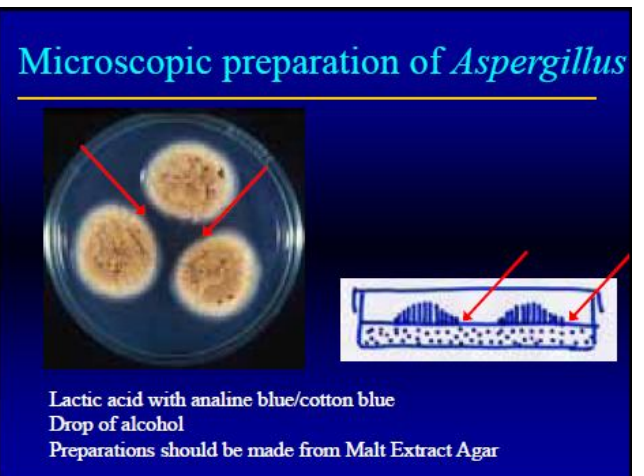
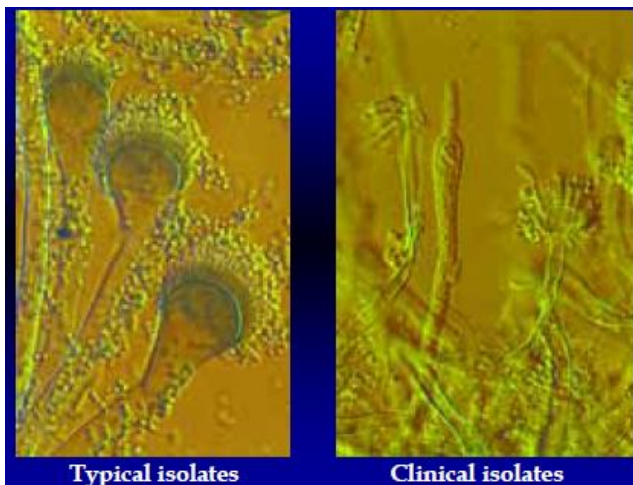
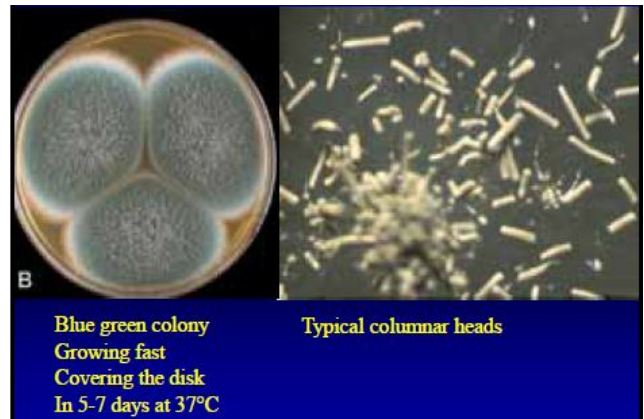
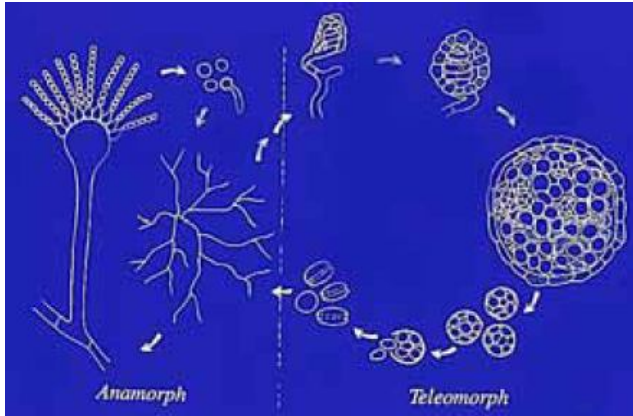
ANNEXURE 4

COLONY MORPHOLOGY, SHAPE & CELL ARRANGMENT OF MICROORGANISM

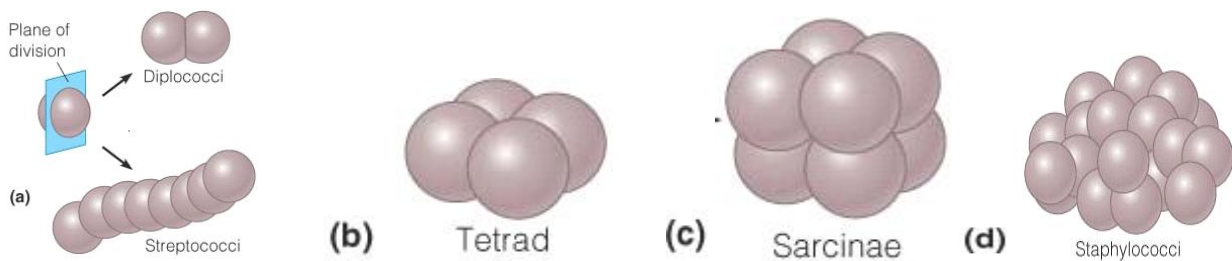


ANNEXURE 4

COLONY MORPHOLOGY, SHAPE & CELL ARRANGMENT OF MICROORGANISM



- Coccus (spherical) :



ANNEXURE 4

COLONY MORPHOLOGY, SHAPE & CELL ARRANGMENT OF MICROORGANISM

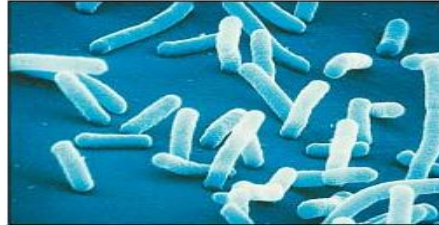
- Bacillus (rod like)

(a) Single bacillus

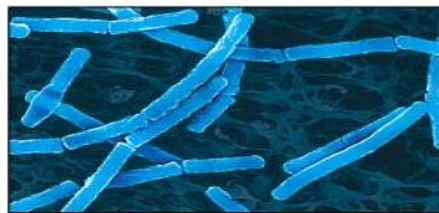
(b) Diplobacilli

(c) Streptobacilli

Coccobacillus



Most bacilli appear as single rods. Diplobacilli appear in pairs after division



Streptobacilli appear in chains after division



Some bacilli are so short and fat that they look like cocci and are referred to as coccobacilli

Vibrios look like curved rods

Vibrio

Spirillum

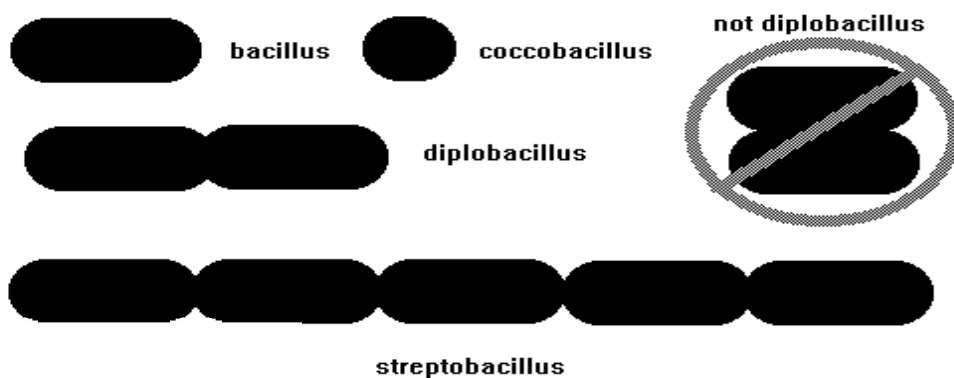
Spirilla have a helical shape and fairly rigid bodies.

Spirochete

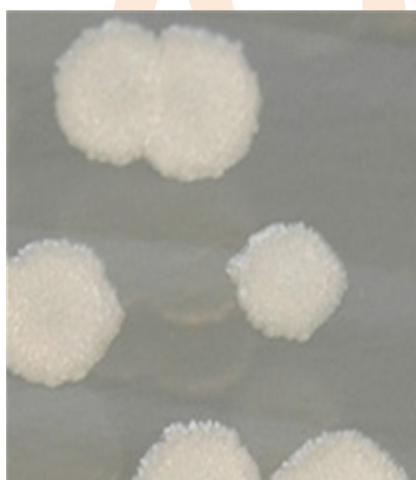
ANNEXURE 4

COLONY MORPHOLOGY, SHAPE & CELL ARRANGMENT OF MICROORGANISM

- Bacilli



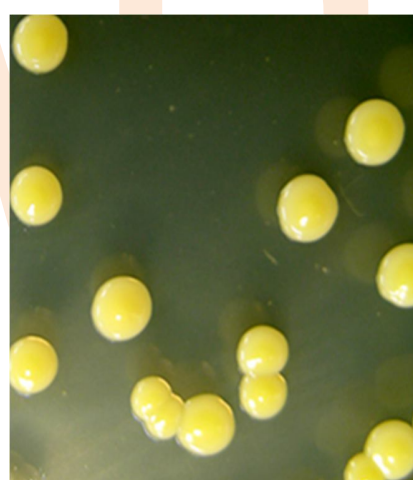
Colony Morphology



Bacillus subtilis colonies are large and white, with irregular form, raised elevation, and undulate margins. They are opaque and dry.



Staphylococcus aureus colonies are small and light yellow, with circular form, convex elevation, and entire margins. They are translucent and butyrous.



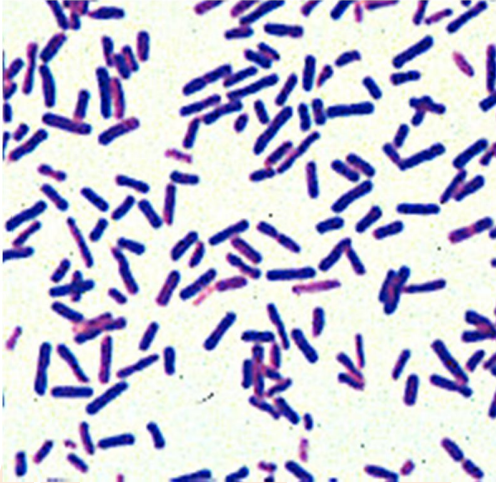
Micrococcus luteus colonies are small and bright yellow, with circular form, convex elevation, and entire margins. They are opaque and butyrous.

ANNEXURE 4

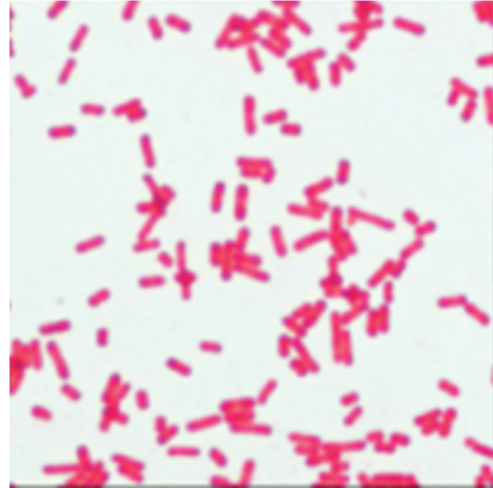
COLONY MORPHOLOGY, SHAPE & CELL ARRANGMENT OF MICROORGANISM

Four Main bacterial categories can be identified by Gram Stain

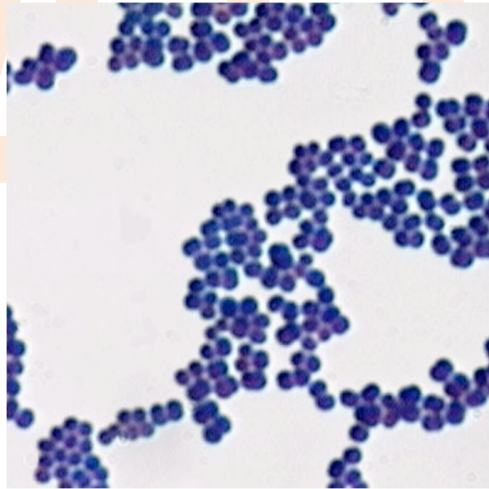
Gram-Positive
Rods



Gram-Negative
Rods



Gram-Positive
Cocci



Gram-Negative
Cocci

